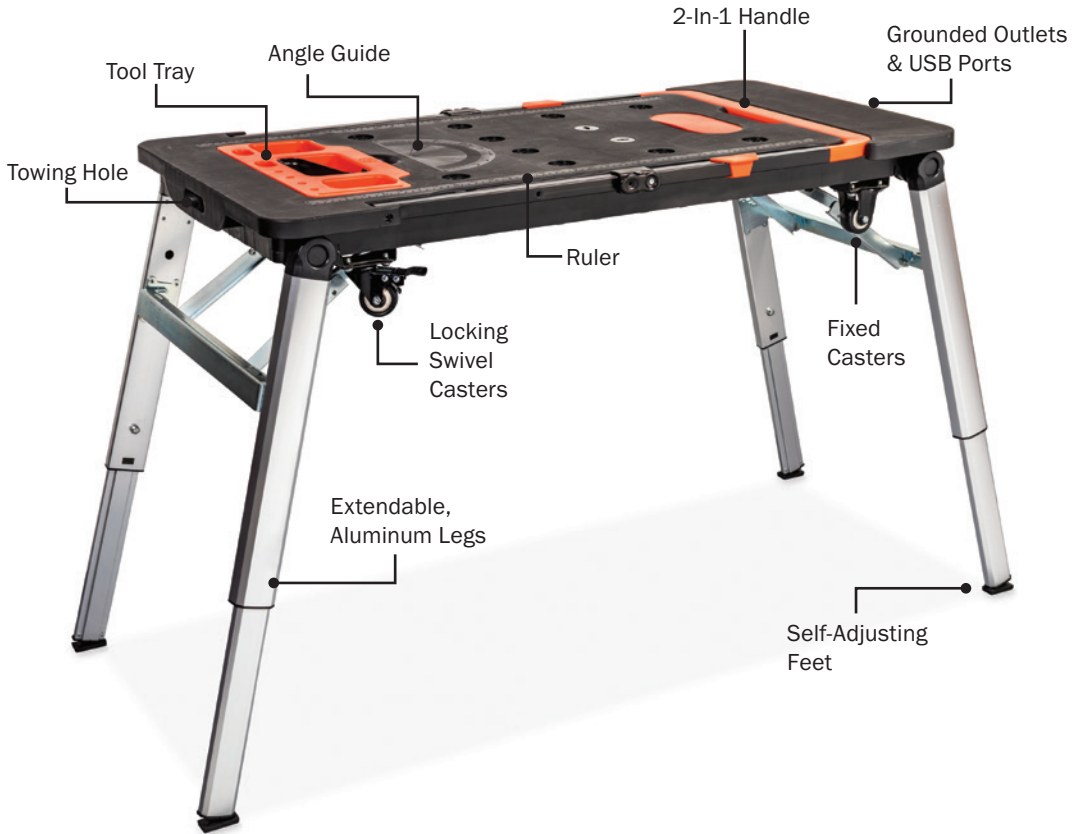




7-IN-1 MULTI-PURPOSE WORKBENCH

User manual and care instructions.



Thank you for selecting this quality Griot's Garage product. Your **7-IN-1 MULTI-PURPOSE WORKBENCH** is a portable workbench, a scaffold, a sawhorse, a mobile cart, a dolly, a creeper, and a hand truck. This product can be changed easily between different modes by following the instructions in this manual.

Have fun in your garage![®]

⚠ WARNING!



PLEASE READ ALL INSTRUCTIONS AND ASSEMBLY DIRECTIONS AND SAVE FOR FUTURE REFERENCE. FAILURE TO FOLLOW THESE SAFETY PRECAUTIONS AND INSTRUCTIONS COULD RESULT IN DAMAGE TO THE PRODUCT AND/OR SERIOUS INJURY TO YOU.

TOOLS NEEDED FOR ASSEMBLY

- #3 Phillips Head -OR- 12mm Socket or Universal Socket

TECHNICAL SPECIFICATIONS

DIMENSIONS:

| | |
|-------------------------|---|
| Total Workbench Size | 42 3/4" x 21 1/2" |
| Work Surface Board Size | 42 1/2" x 21 3/8" |
| Workbench Height | 30 3/4" |
| Scaffold Height | 20 3/8" |
| Accessory Charging | 2 USB ports |
| Electrical Outlets | 2 grounded 120V, 15-amp surge protector |

LOAD CAPACITIES:

| | |
|--------------------|----------|
| Workbench/Sawhorse | 220 lbs |
| Scaffold/Platform | 440 lbs |
| Creeper & Dolly | 220 lbs |
| Hand Truck | 220 lbs |
| Net Weight | 29.8 lbs |

GENERAL SAFETY RULES

CAUTIONS & WARNINGS

- ⚠ **Warning:** This product is designed for certain applications only. Griot's Garage cannot be responsible for issues arising from modification. We strongly recommend this product not be modified and/or used for any application other than that for which it was designed.
- ⚠ **Caution:** Do not allow persons to operate or assemble this product until they have read this manual and have developed a thorough understanding of how the product works.
- ⚠ **Caution:** The warnings, cautions, and instructions discussed in this instruction manual cannot cover all possible conditions or situations that could occur. It must be understood by the operator that common sense and caution are factors which cannot be built into this product, but must be supplied by the operator.

IMPORTANT SAFETY CONSIDERATIONS

- Make sure all moving parts are free from interference.
- Keep hands clear of all moving parts.
- Ensure **7-in-1 Multi-Purpose Workbench** is used in a dry place protected from rain. Do not store outdoors or in a moist environment. (If used for car washing, please ensure power is NOT connected.)
- Keep work area well lit.
- Be aware of your balance. When using this product in all modes, please keep your body or heavy object in the center of the work surface to avoid loss of balance which may result in personal injury.

- When transporting in a vehicle always tie the **7-in-1 Multi-Purpose Workbench** down to prevent movement and possible damage.
- Check to make sure that all fixing screws and knobs are tight and all legs are locked into position before operating the **7-in-1 Multi-Purpose Workbench**.
- Don't use Scaffold Mode with legs fully extended. Always use this product on a stable, level surface. Failure to properly position or overloading the product may result in serious personal injury.
- The product must be used only for its prescribed purpose. Any use other than those mentioned in these instructions will be considered a case of misuse. Griot's Garage shall not be liable for any damage or injury resulting from such cases of misuse.
- Griot's Garage shall not be liable for any changes made to the tool nor for any damage resulting from such changes.

INTENDED USE

This versatile **7-in-1 Multi-Purpose Workbench** can serve as a workbench, sawhorse, scaffold, platform, car creeper, dolly, and hand truck. It can be transformed easily between different modes by following the instruction manual. This product is intended for DIY and light trade use.

ASSEMBLY

Your **7-in-1 Multi-Purpose Workbench** comes fully assembled, just take it out of the packaging, install the wheels, and follow the simple set-up steps. You'll soon be ready to tackle all your projects.



Workbench Mode



Sawhorse Mode



Scaffold Mode



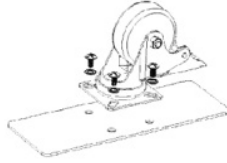
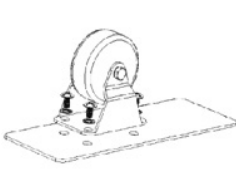
Platform Mode



Creeper & Dolly Mode



Hand Truck Mode



Wheel Installation quick reference



HAND TRUCK MODE / CAR CREEPER & DOLLY MODE

Please follow the following steps to install the wheels to achieve Car Creeper & Dolly Mode and Hand Truck Mode. The four wheels and all pertinent fasteners are packed separately in the master carton. There are two universal/steering wheels plus two fixed wheels in the set, and each wheel type has its own position. Please refer to the accompanying schematic drawing. Please note that the steering wheels with brakes must be installed on the truck handle end of the workbench and the fixed wheels must be installed on the opposite end.

Hand Truck Mode



Pull the handle up from the platform until you hear it click into place. The product is ready to perform in Hand Truck Mode. To convert from Hand Truck Mode push the two handle buttons in and swing the handle back into the platform.

Scaffold & Platform Mode



Release all legs from their locking position, then swing each pair of legs until they are perpendicular to the platform. See diagram above. To ensure stability, engage gusset braces by pulling them until they are flat and locked in place. Repeat for all the other gusset braces. See diagram above.



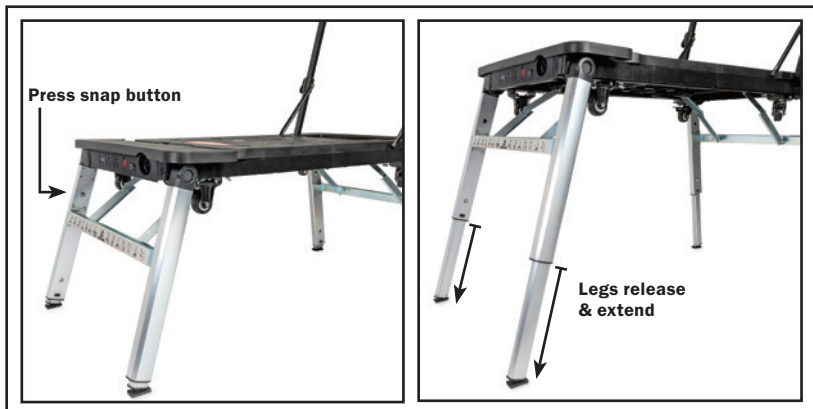
⚠ WARNING: DON'T USE SCAFFOLD/PLATFORM MODE WITH LEGS FULLY EXTENDED. The inner legs are not designed to be used in this function.

For Platform Mode, simply pull the handle up from the platform until it's fully extended then release the tool tray from its locking position. You can put the tool tray on the top of the handle, forming a platform.

NOTE: THE WEIGHT CAPACITY FOR THE TOOL TRAY IS 4.5 POUNDS IN THIS MODE.

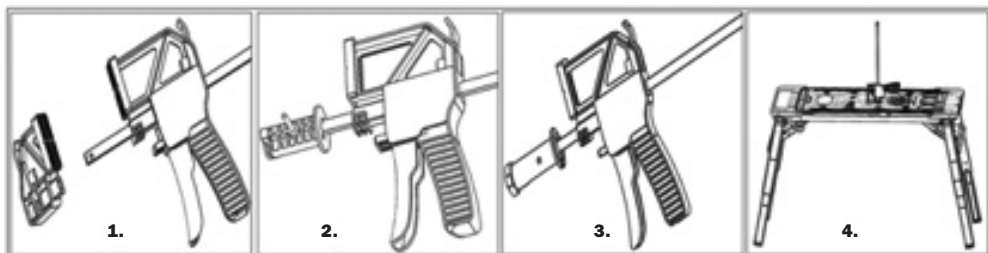
Hang the hook on the handle, where it can be used to hold tool bags while working on the platform.

Workbench & Sawhorse Mode



Begin by setting up the legs by following the same steps detailed within Scaffold Mode section. Then, push the snap buttons on the side of each leg to release them, then pull the inner legs out to the workbench height. When legs are fully extended they will snap into place.

NOTE: DO NOT step on the workbench while the legs are fully extended.



(Clamps not included with workbench.)

Quick Clamp Installation (Clamps not supplied with workbench)

Remove the small plastic part of your quick clamp (Figure 1) then insert the steel bar into our connector (Figure 2) and put a pin into the lock hole, make sure they are connected firmly (Figure 3). Put the connector into the sawhorse hole on the workbench surface and rotate at least 30 degrees (Figure 4). With the help of the 2 vice pegs on the workbench, Sawhorse Mode is completed.

POWER & CONNECTIVITY

Your **7-in-1 Multi-Purpose Workbench** is equipped with 2 grounded 120V electrical outlets to power your projects. Plug in saws, sanders, our random orbitals whatever tool you need. The plug array also has 2 USB ports to charge your mobile devices and features a 15-amp surge protector for added peace of mind.

MAINTENANCE

Wipe away dirt and dust from the workbench on a regular basis. It is recommended that the general condition of any workbench be examined before it is used. Keep your workbench in good repair by adopting a program of conscientious repair and maintenance. Have necessary repairs made by qualified service personnel.

ANSWERS TO YOUR QUESTIONS

Should you have any comments or questions about the use of your

7-in-1 Multi-Purpose Workbench (Item # 91582), our Customer Service Department can be reached by phone or email. For a complete selection of products or to receive a free Griot's Garage Handbook, please call us or visit us at griotsgarage.com.

Customer Service Department

800-345-5789

customerservice@griotsgarage.com



Have fun in your garage![®]

Griot's Garage, Inc. • 3333 South 38th Street • Tacoma, WA 98409
800-345-5789 • griotsgarage.com

©2020 Griot's Garage Inc.

Item# 91582